



A Division of Thiessen Products, Inc.

INSTRUCTION SHEET FOR TOOL #900

H-D CRUISE DRIVE 6-SPEED MAIN DRIVE GEAR & BEARING REMOVER / INSTALLER TOOL

USE ON ANY H-D 6-SPEED CRUISE DRIVE TRANSMISSION 2006 TO PRESENT

Other recommended JIMS tools for H-D Cruise Drive 6-speed:

- No. **989** *Mainshaft pulley locknut socket tool*
- No. **984** *Trap door removal tool*
- No. **911** *Trap door bearing removal tool*
- No. **985** *Shift fork shaft removal tool*
- No. **349920-84** *Mainshaft race remover*
- No. **972** *Main drive gear seal installer tool*
- No. **992** *Modular transmission stand, all Twin Cams*

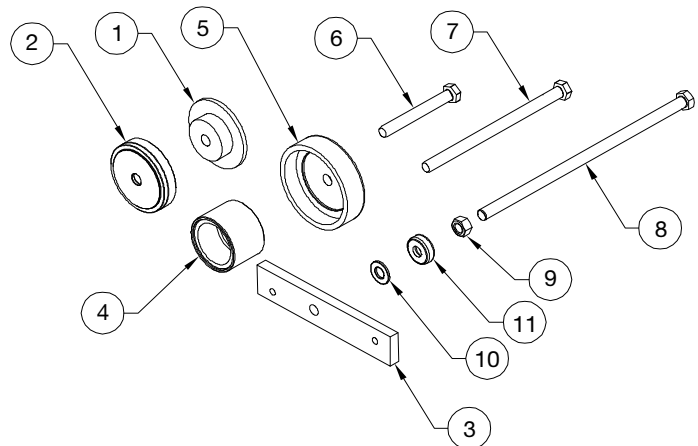
Recommended H/D parts as needed:

- No. **8967** *Bearing, Main trans case*
- No. **11161** *Retaining ring*
- No. **12074** *Seal, Main*
- No. **35122-06** *Maindrive gear assembly*

Read complete instructions thoroughly before disassembling or assembling. Refer to figure No.'s, parts lists and photo's.

NOTE: IF YOU DO NOT KNOW WHAT YOUR'RE DOING , DO NOT DO IT! ALWAYS WEAR SAFETY GLASSES OR OTHER FACE AND EYE PROTECTION SUCH AS A FULL FACE AND EYE PROTECTION. JIMS IS NOT RESPONSIBLE FOR DAMAGE , INJURY, OR THE QUALITY AND SAFETY OF YOUR WORK.

PARTS AVAILABLE SEPARATELY			
No.	Qty.	Description	Part No.
1	1	BEARING REMOVER	900-1
2	1	INSTALLATION CUP	987-1
3	1	INSTALLER/REMOVER BAR	987-2
4	1	INSTALLER PLATE	981-1
5	1	RECEIVER CUP	1720-2
6	1	SCREW, 4" LG.	1456
7	1	SCREW, 8" LG.	2137
8	1	SCREW, 12" LG.	2138
9	1	NUT	2136
10	1	WASHER	2038
11	1	BEARING	2010



CAUTION: WEAR SAFETY GLASSES OVER YOUR EYE'S.
SEE JIMS® CATALOG FOR HUNDREDS OF TOP QUALITY PROFESSIONAL TOOLS.
THE LAST TOOLS YOU WILL EVER NEED TO BUY.

Performance Parts For Harley-Davidson Motorcycles



A Division of Thiessen Products, Inc.

INSTRUCTION SHEET FOR TOOL #900

OTHER RECOMMENDED TOOLS FOR USE WITH THIS TOOL

- | | |
|----------------------------------|----------------------------------|
| 2 - 3/4" Box end wrench | 1 - 1/4" Allen wrench |
| 1- Quality retaining ring pliers | 1- Torque wrench and 3/4" socket |
| 1 - H-D Service manual | |

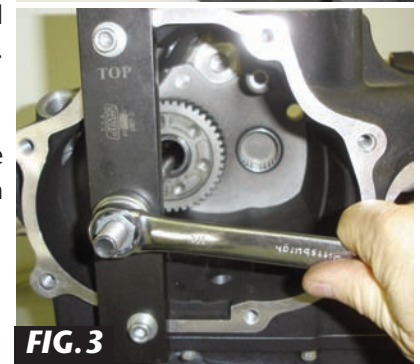
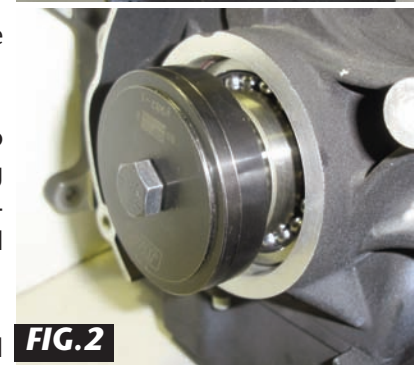
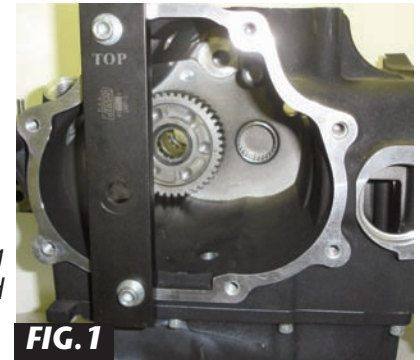
REMOVING THE MAIN DRIVE "GEAR"

Note: The main drive gear may be removed from trans case without removing the trans case from frame. The main bearing and lock ring must be replaced after removal of maindrive gear.

1. Refer to H-D Service Manual for tear down of the transmission assembly to the point of removing the main drive gear.
2. Attach the installation bar tool No. **987-2** to the trap door side of case. Use two allen screws with washers H-D No. **3249** from existing trap door mounting hardware. Locate bar tool No. **987-2** correctly on case two of the door mounting holes. The tool bar has been laser marked with "Top" on the tool bar and must face you and be at the top of trans case. **See Fig 1.**
3. Install No. **2138** 12" long screw through center hole of No. **987-1** gear removal cup and into case through the main drive gear. Insert end of 12" screw into tool bar hole No. **987-2**. Now install No. **2010** bearing, No. **2038** washer and No. **2038** nut. **See Fig 2 and Fig 3.**
4. Use two 3/4" box end wrenches to remove gear. Hold No. **2138** screw with one wrench while using the other to tighten nut No. **2136** clockwise until the main drive gear is pressed from the bearing. **See Fig 3**

REMOVING THE MAIN DRIVE GEAR CASE "BEARING"

1. After main drive gear has been removed (if the maindrive gear will be reused, remove bearing race and keep gear clean.)
2. Remove main seal and main bearing retaining ring from bearing bore in trans case per H-D service manual.
3. From inside the case remove the ball bearing cage from the main bearing. **See Fig.4**



CAUTION: WEAR SAFETY GLASSES OVER YOUR EYE'S.
SEE JIMS® CATALOG FOR HUNDREDS OF TOP QUALITY PROFESSIONAL TOOLS.
THE LAST TOOLS YOU WILL EVER NEED TO BUY.

Performance Parts For Harley-Davidson Motorcycles



A Division of Thiessen Products, Inc.

INSTRUCTION SHEET FOR TOOL #900

4. Install No. **1456** 4" long screw through the center of No. **900-1**, and insert assembly into the main bearing from inside of case. Step side facing bearing and lube the threads at the end of screw No. **1456** protruding from main bearing. **See Fig 5**

5. Place the 4" screw No. **1456** through No. **1720-2** center hole with the cup side facing main bearing on the outer side of the case, followed by bearing No. **2010**, No. **2038** washer and then No. **2136** nut threaded on screw end.

See Fig 6

6. Use two 3/4" box end wrenches to remove bearing. Hold No. **2137** screw with one wrench while using the other to tighten nut No. **2136** clockwise until the main bearing is pressed from the case. **See Fig 6**

Note: Hold all tools in alignment with the bearing bore and bearing as you apply torque to the bolt and nut.

INSTALLING THE MAIN DRIVE GEAR CASE "BEARING"

Note: Before installing a new bearing in trans case, make sure bore is in serviceable condition and the inside of case is washed out.

1. Attach the installation bar tool No. **987-2** to the trap door side of case. Use two allen screws with washers H-D No. **3249** from existing trap door mounting hardware. Locate bar tool No. **987-2** correctly on case door mounting holes. The tool bar has been laser marked with "Top" on the tool bar and must face you and be at the top of trans case. **See Fig 7**. Install No. **2138** 12" long screw through center hole of No. **987-2** installation tool bar and into case, through the bearing bore. **See Fig 8**
2. Apply a small amount of clean engine oil to the O.D. of new main bearing, then place the new bearing up to its bore, with the protruding race of bearing facing the outside of case. Next place bearing installer tool No. **987-1** with the cup side facing the bearing followed by No. **1720-2** alignment cup, then bearing No. **2010**, No. **2038** washer and then No. **2136** nut threaded on screw end. **See Fig 9**.
3. Use two 3/4" box end wrenches to hold No. **2138** screw and other to tighten nut No. **2136** clockwise until the alignment cup No. **1720** lightly seats with full contact on the trans case. **See Fig 10**.



FIG. 5

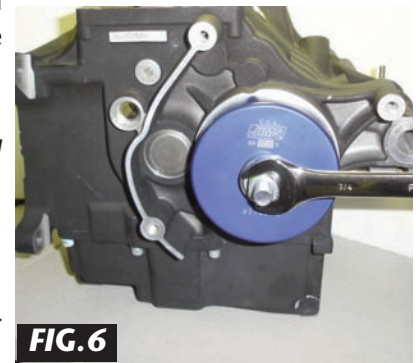


FIG. 6

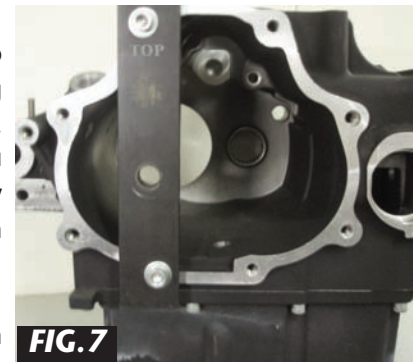


FIG. 7



FIG. 9

CAUTION: WEAR SAFETY GLASSES OVER YOUR EYE'S.
SEE JIMS® CATALOG FOR HUNDREDS OF TOP QUALITY PROFESSIONAL TOOLS.
THE LAST TOOLS YOU WILL EVER NEED TO BUY.

Performance Parts For Harley-Davidson Motorcycles

INSTRUCTION SHEET FOR TOOL #900

4. Now remove the alignment cup No.1720 and reinstall the bearing, washer, and nut. Next torque the No. 2136 nut while holding the No. 2138 screw until the main bearing is pressed evenly (not crooked) into the bearing bore and seated. **See Fig 11.**

Note: It should not require more than 35 ft lbs of torque to install the new bearing, check that bearing has bottomed (stops) on the cast lip of trans case.

INSTALLING THE MAIN DRIVE "GEAR"

1. Install a new o-ring on the main drive gear and apply a small amount of clean engine oil to both sides of o-ring and the I.D. of newly installed bearing. Next Install No. 2137 8" long screw through the center of No. 987-1, with flat side facing bearing then gently place screw No.2137 through maindrive gear and up against the installing plate No.987-1. **See Fig 12**
2. Place this assembly through main bearing. Lube threads at the end of screw No. 2137 protruding from main bearing, followed by assembly cup No. 981-1, bearing No. 2010, No. 2038 washer and then No. 2136 nut threaded on screw end. **See Fig 13**
3. Use one 3/4" box end wrench to hold No. 2138 screw while using a torque wrench at the other end to tighten nut No. 2136 clockwise until the maindrive gear is pulled into bearing. **See Fig 13**

Note: It should not require more than 35 ft lbs of torque to install the new main-drive gear, check that maindrive gear has bottomed (stops) on the face of case bearing.

4. Install a new bearing retaining ring with the flat side against bearing, make sure ring is seated 100% in its groove and the opening is at the 3:00 o'clock position with one end at the 2:00 o'clock and the other end is at 4:00 o'clock.

See Fig 14.

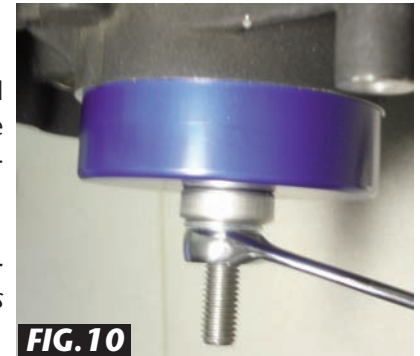


FIG. 10



FIG. 11



FIG. 12



FIG. 14

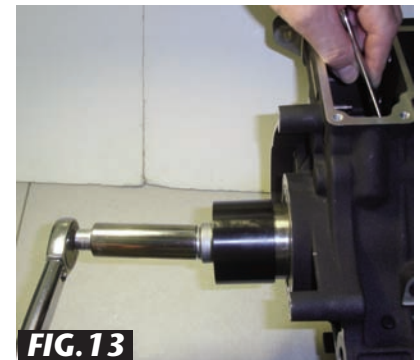


FIG. 13

CAUTION: WEAR SAFETY GLASSES OVER YOUR EYE'S.
SEE JIMS® CATALOG FOR HUNDREDS OF TOP QUALITY PROFESSIONAL TOOLS.
THE LAST TOOLS YOU WILL EVER NEED TO BUY.

Performance Parts For Harley-Davidson Motorcycles