



INSTRUCTION SHEET FOR TOOL #1147

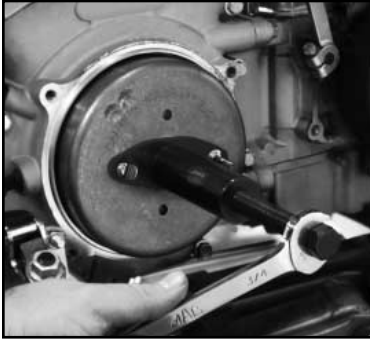
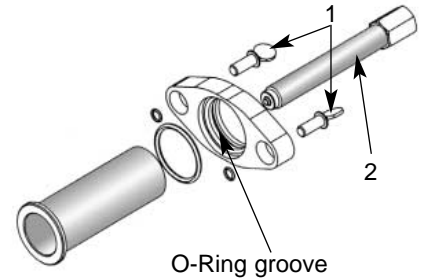
ALTERNATOR ROTOR REMOVER

Use on 1997 to present FLHT Ultra or any Big Twin with a 45 AMP high output charging system.

WARNING: Disconnect Battery negative cable before performing work.

Note: Read all instructions before starting job.

1. Minor preassembly required as per shown in diagram below. Tuck O-ring inside that base plate's groove before inserting lightly lubed tube through base plate.
2. Refer to H.D.® Service Manual for removing components to gain access to the 45 AMP alternator rotor.
3. It is recommended that you use JIMS® No.1048 Hard Cap



Tool or equivalent to protect the end of the shaft. Note: Be sure that the sprocket shaft threads are free of any thread locking compound before installing the Hard Cap Tool.

4. Fully retract the press screw (No.2) as needed before attaching tool assembly against rotor housing. Attach two thumb screws (No.1) into threaded holes on rotor as shown.
5. Turn the press screw in using either a wrench or ratcheting socket drive until rotor is free. **IMPORTANT!**: Never use an impact driver with this tool.

CAUTION: WEAR SAFETY GLASSES. EXCESSIVE FORCE MAY DAMAGE PARTS AND TOOL. SEE JIMS® CATALOG FOR OVER 100 OTHER TOP QUALITY PROFESSIONAL TOOLS. THE LAST TOOLS YOU WILL EVER NEED TO BUY.

"FROM THE TRACK... TO THE STREET!"

555 DAWSON DRIVE, CAMARILLO, CA 93012 • PHONE 805-482-6913 • FAX 805-482-7422 • WWW.JIMSUSA.COM



INSTRUCTION SHEET FOR TOOL #1147

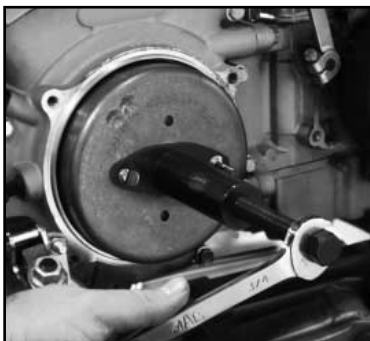
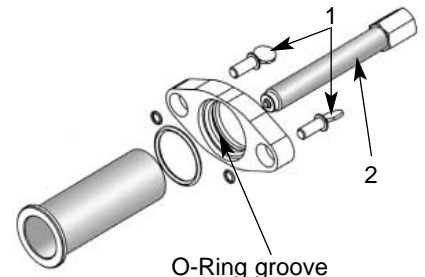
ALTERNATOR ROTOR REMOVER

Use on 1997 to present FLHT Ultra or any Big Twin with a 45 AMP high output charging system.

WARNING: Disconnect Battery negative cable before performing work.

Note: Read all instructions before starting job.

1. Minor preassembly required as per shown in diagram below. Tuck O-ring inside that base plate's groove before inserting lightly lubed tube through base plate.
2. Refer to H.D.® Service Manual for removing components to gain access to the 45 AMP alternator rotor.
3. It is recommended that you use JIMS® No.1048 Hard Cap



Tool or equivalent to protect the end of the shaft. Note: Be sure that the sprocket shaft threads are free of any thread locking compound before installing the Hard Cap Tool.

4. Fully retract the press screw (No.2) as needed before attaching tool assembly against rotor housing. Attach two thumb screws (No.1) into threaded holes on rotor as shown.
5. Turn the press screw in using either a wrench or ratcheting socket drive until rotor is free. **IMPORTANT!**: Never use an impact driver with this tool.

CAUTION: WEAR SAFETY GLASSES. EXCESSIVE FORCE MAY DAMAGE PARTS AND TOOL. SEE JIMS® CATALOG FOR OVER 100 OTHER TOP QUALITY PROFESSIONAL TOOLS. THE LAST TOOLS YOU WILL EVER NEED TO BUY.

"FROM THE TRACK... TO THE STREET!"

555 DAWSON DRIVE, CAMARILLO, CA 93012 • PHONE 805-482-6913 • FAX 805-482-7422 • WWW.JIMSUSA.COM